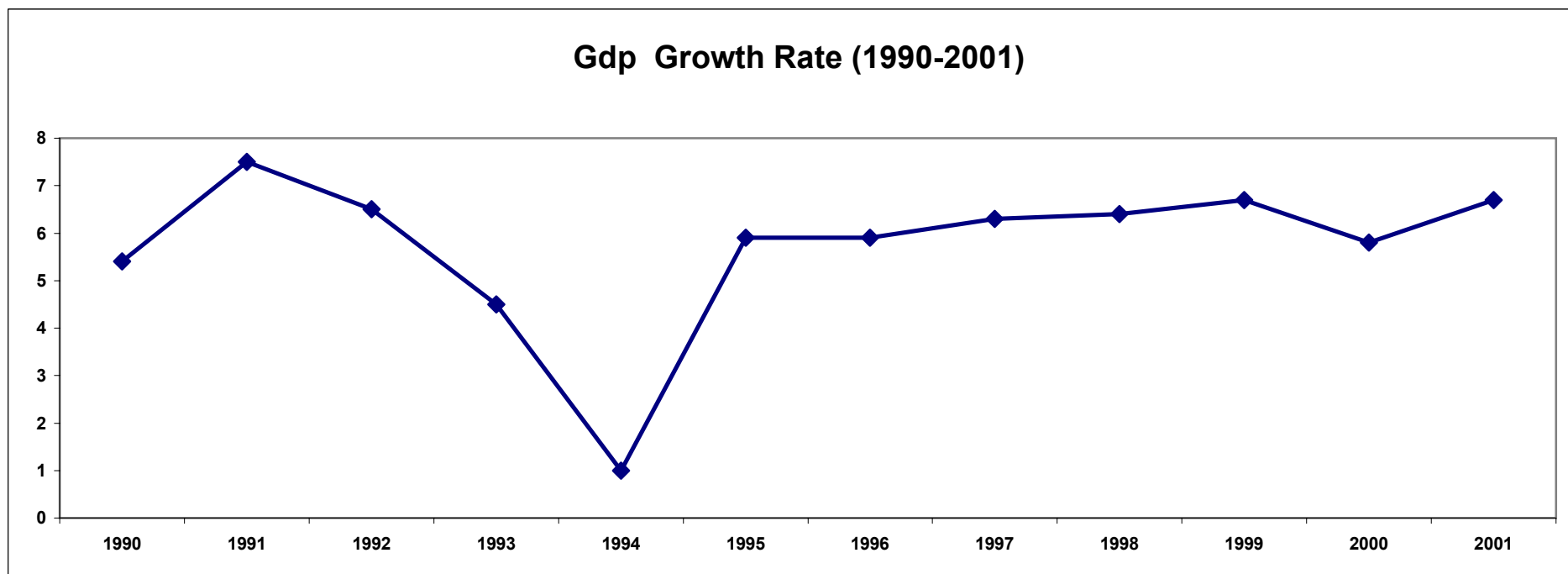


## GROSS DOMSTIC PRODUCT

GDP	1990	1991	1992	1993	1994	1995	1996	1997	1998	1999	2000	2001
at current prices(SD.M)	11011.07	19266.03	42181.8	94844.8	188128.9	552910.7	1033068	1676937	2289600	2601900	2892300	3241084
at current prices (\$)	2446.8	2768.1	4327.8	5862.1	6351.2	9880.7	8259.3	10684.8	11513.7	10325	11242.2	12596.5

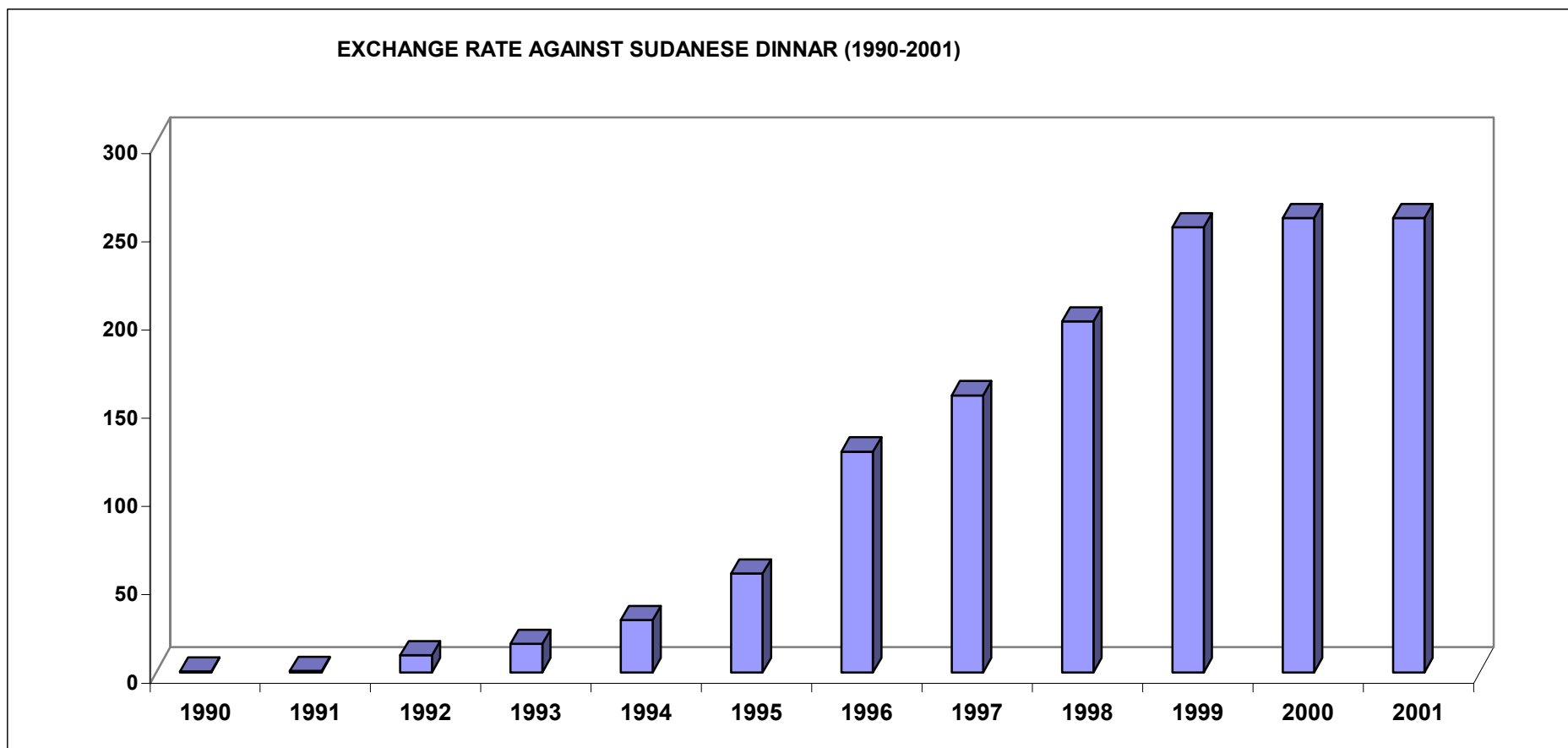
## GDP GROWTH RATE (1990-2001)

year	1990	1991	1992	1993	1994	1995	1996	1997	1998	1999	2000	2001
%	5.4	7.5	6.5	4.5	1.0	5.9	5.9	6.3	6.4	6.7	5.8	6.4



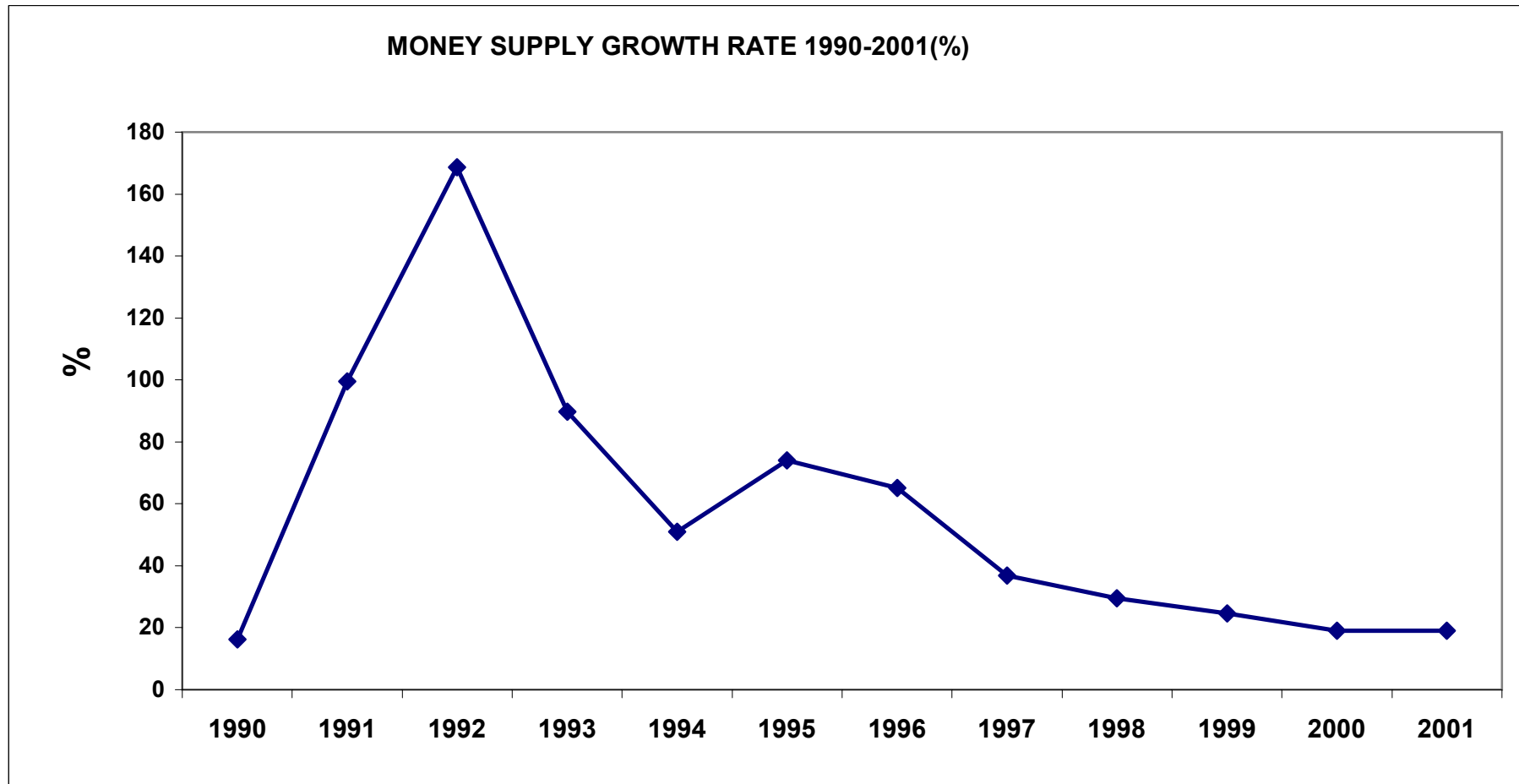
### EXCHANGE RATE AGAINST THE SUDANESE DINNAR

year	1990	1991	1992	1993	1994	1995	1996	1997	1998	1999	2000	2001
	0.45	0.69	9.7	16.1	29.6	55.9	125	156.9	198.8	252.1	257.2	257.3



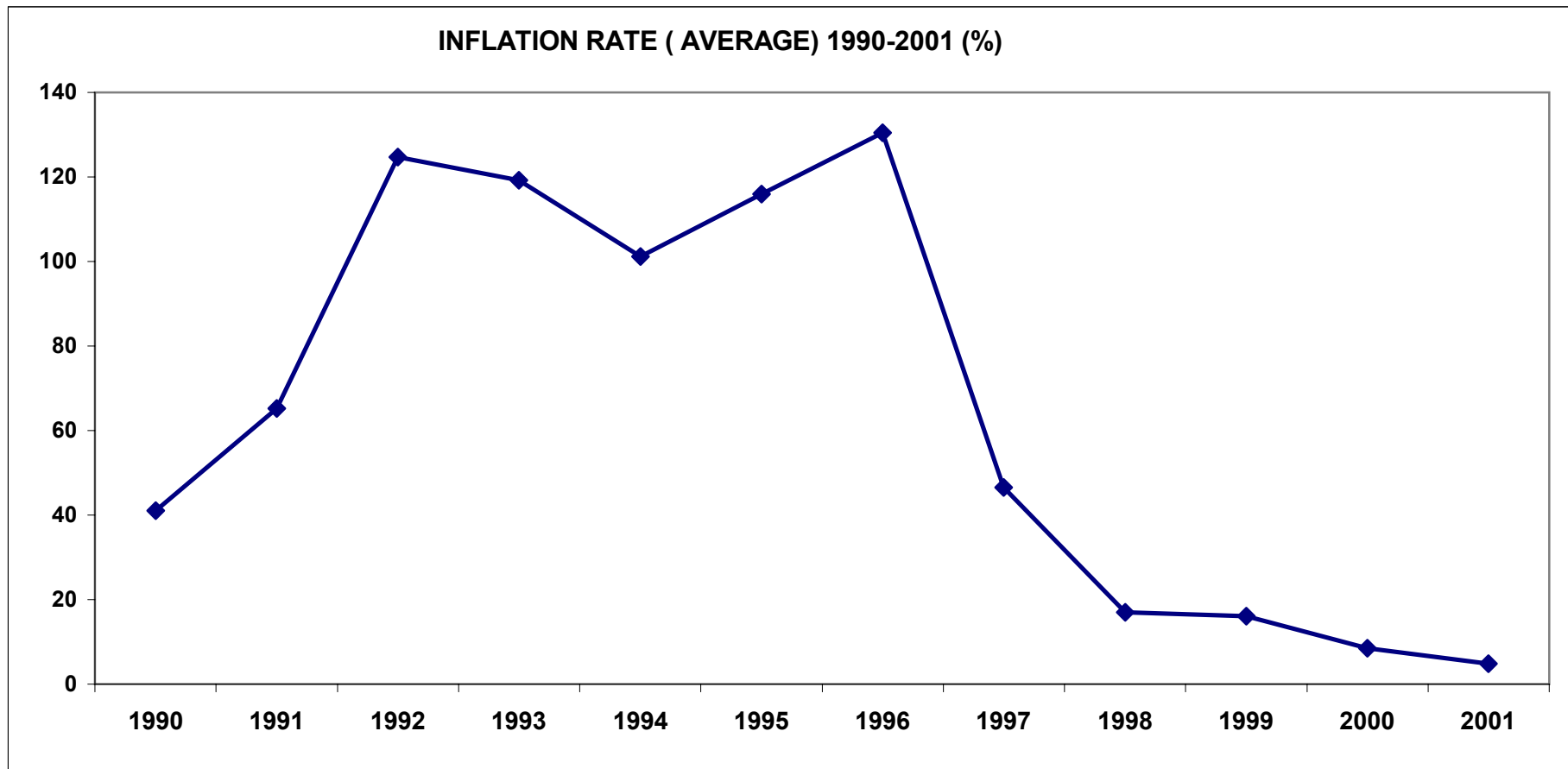
### MONEY SUPPLY GROWTH RATE 1990-2001(%)

Year	1990	1991	1992	1993	1994	1995	1996	1997	1998	1999	2000	2001
	16.2	99.5	168.7	89.7	50.9	74.1	65.1	36.9	29.5	24.6	33.8	26



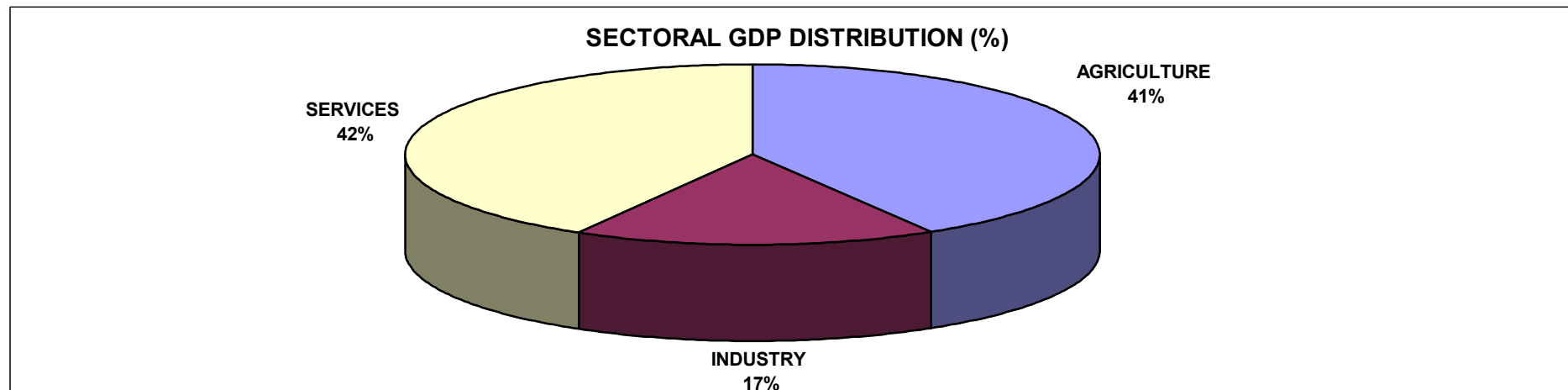
### INFLATION RATE ( AVERAGE) 1990-2001 (%)

Year	1990	1991	1992	1993	1994	1995	1996	1997	1998	1999	2000	2001
Rate	124.7	119.2	101.2	115	96.3	130.4	46.6	47.7	17.1	16	8	4.8



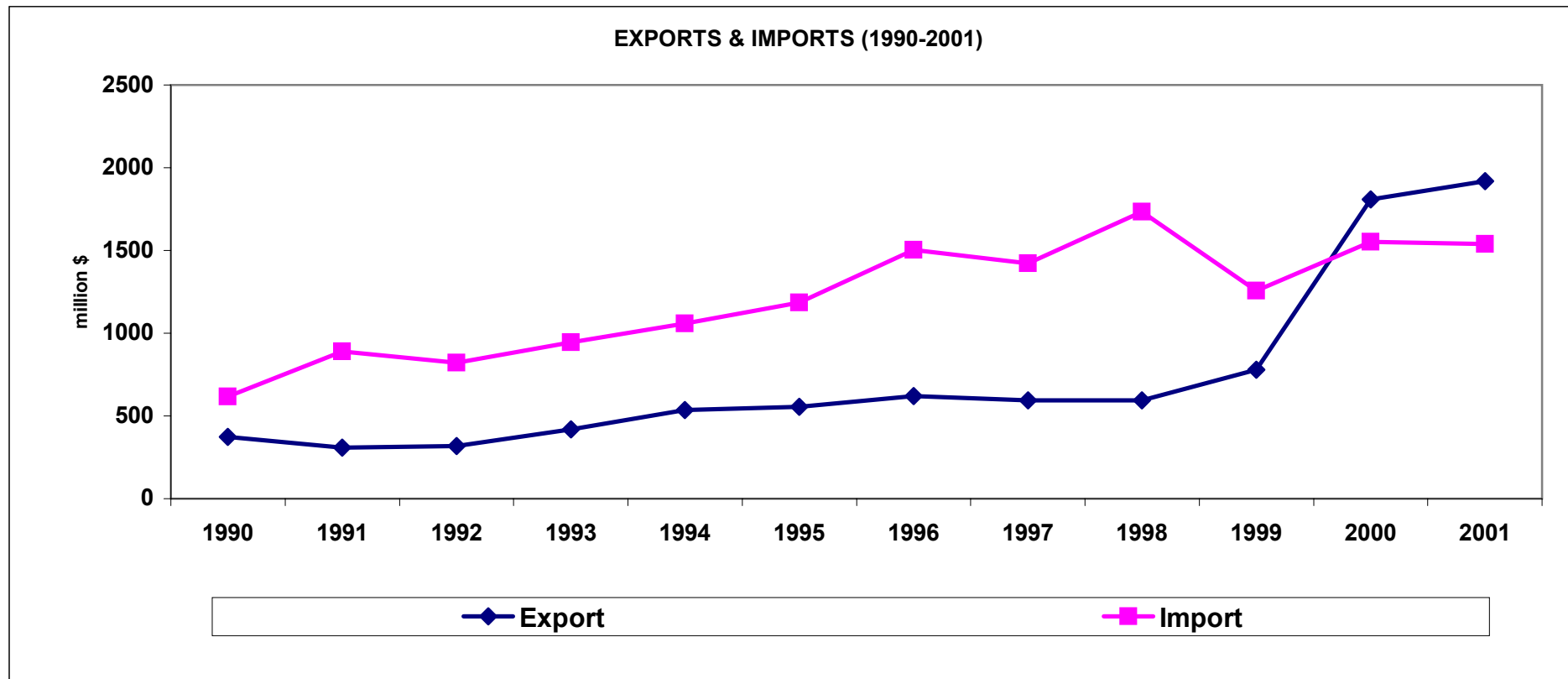
### SECTORAL GDP DISTRIBUTION (%)

SECTOR	1992	1993	1994	1995	1996	1997	1998	1999	2000	average
<b>AGRICULTURE</b>	<b>33.7</b>	<b>37.9</b>	<b>40.1</b>	<b>43.1</b>	<b>44.9</b>	<b>47.6</b>	<b>48.6</b>	<b>49.8</b>	<b>46.4</b>	43.5
Irrigated Crops	12.6	10.3	11.1	11.2	13.3	14.1	14.3	12.8	12.7	12.4
Rainfed Machanised Crops	4.8	4.6	2.3	2.8	2.2	3.2	1.9	2.7	1.1	2.8
Rainfed Traditional Crops	2.5	3.9	4.1	6.7	6	6.9	7.4	8.7	7.6	5.9
Livestock	11	16.4	19.5	19.4	20	20	21.7	22.3	21.8	19.1
Forest, Fisher & others	2.8	2.7	3.1	3	3.4	3.4	3.3	3.3	3.2	3.1
<b>INDUSTRY</b>	<b>17.1</b>	<b>17.4</b>	<b>16.4</b>	<b>15.8</b>	<b>14.5</b>	<b>15.1</b>	<b>15</b>	<b>15.8</b>	<b>21.4</b>	16.5
Mining & Quarrying	0.1	0.1	0.1	0.1	0.9	0.9	0.9	1.9	7.5	1.3
Manufacturing	9.6	10.1	8.8	8.6	6.5	7.4	7.2	7.2	7.5	8.1
Electricity & Water	2.1	2.3	2.3	2.2	1.9	1.9	1.8	1.8	1.7	2
Construction	5.3	4.9	5.2	4.9	5.2	4.9	5.1	4.9	4.7	5
<b>Services</b>	<b>49.1</b>	<b>44.5</b>	<b>43.5</b>	<b>41.1</b>	<b>40.6</b>	<b>37.2</b>	<b>36.2</b>	<b>34.4</b>	<b>32.2</b>	35.3
Government Services	10.3	7.8	7.8	7.2	7.5	5.9	6.5	6.2	5.8	6
Other Services	38.8	36.7	35.7	33.9	33.1	31.3	29.7	28.2	26.4	29



## TRADE BALANCE (U\$M)

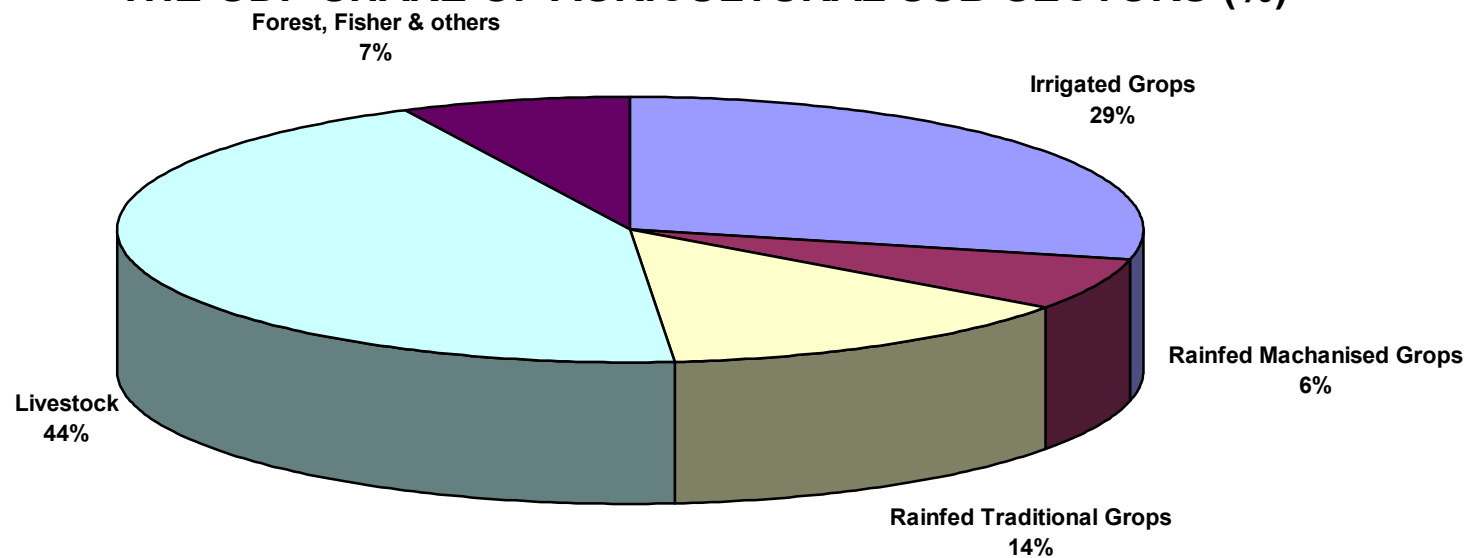
Year	1990	1991	1992	1993	1994	1995	1996	1997	1998	1999	2000	2001
<b>Exports</b>	374	308.7	319.3	417.3	535.6	555.7	620.3	594.2	595.7	780.1	1808	1698
<b>Imports</b>	618.4	890.3	820.9	944.9	1059.6	1184.8	1504.5	1421.9	1732.2	1256.2	1553	1585
<b>Trade Balance</b>	-244.4	-581.6	-501.6	-527.6	-524	-629.1	-884.2	-827.7	-1136.5	-476.1	255	113



### THE GDP SHARE OF AGRICULTURAL SUB-SECTORS (%)

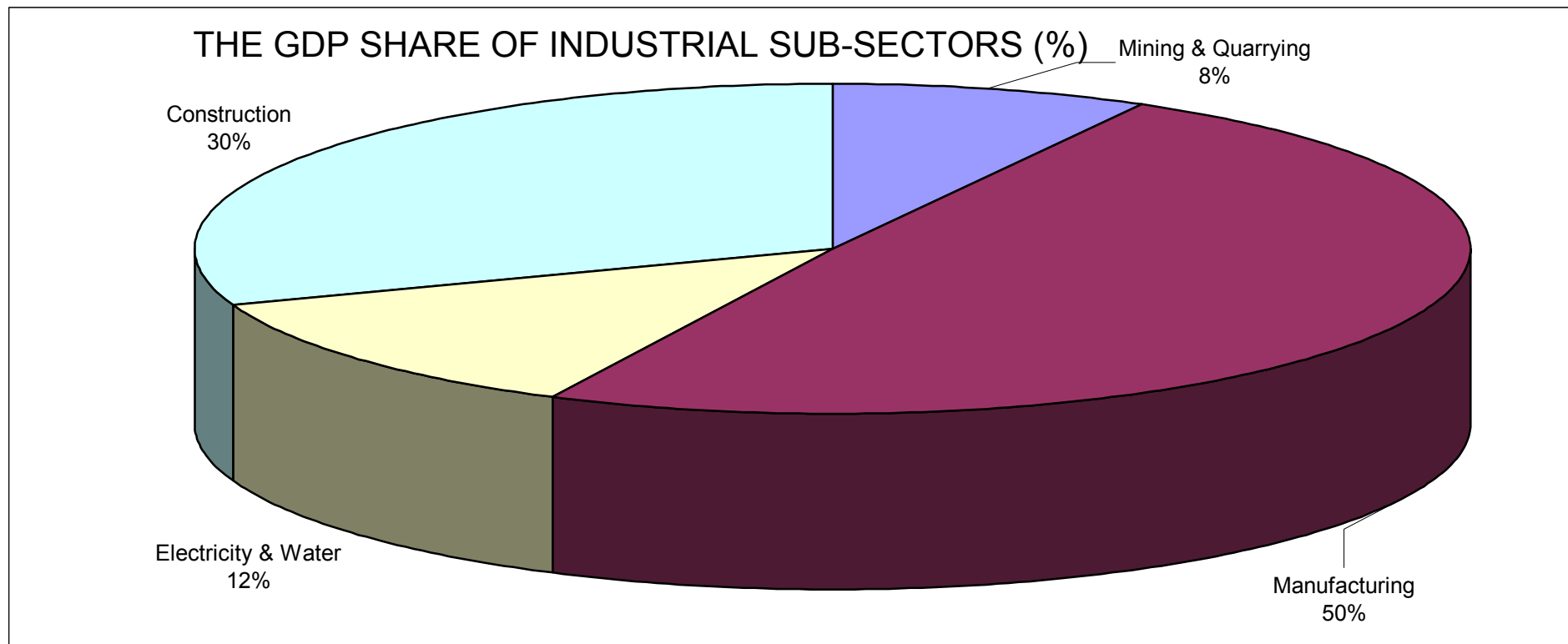
ITEM	1992	1993	1994	1995	1996	1997	1998	1999	2000	average
<b>AGRICULTURE</b>	<b>33.7</b>	<b>37.9</b>	<b>40.1</b>	<b>43.1</b>	<b>44.9</b>	<b>47.6</b>	<b>48.6</b>	<b>49.8</b>	<b>46.4</b>	<b>43.5</b>
Irrigated Grops	12.6	10.3	11.1	11.2	13.3	14.1	14.3	12.8	12.7	12.4
Rainfed Machanised Grops	4.8	4.6	2.3	2.8	2.2	3.2	1.9	2.7	1.1	2.8
Rainfed Traditional Grops	2.5	3.9	4.1	6.7	6	6.9	7.4	8.7	7.6	5.9
Livestock	11	16.4	19.5	19.4	20	20	21.7	22.3	21.8	19.1
Forest, Fisher & others	2.8	2.7	3.1	3	3.4	3.4	3.3	3.3	3.2	3.1

### THE GDP SHARE OF AGRICULTURAL SUB-SECTORS (%)



### THE GDP SHARE OF INDUSTRIAL SUB-SECTORS (%)

SECTOR	1992	1993	1994	1995	1996	1997	1998	1999	2000	average
<b>INDUSTRY</b>	<b>17.1</b>	<b>17.4</b>	<b>16.4</b>	<b>15.8</b>	<b>14.5</b>	<b>15.1</b>	<b>15</b>	<b>15.8</b>	<b>21.4</b>	16.5
Mining & Quarrying	0.1	0.1	0.1	0.1	0.9	0.9	0.9	1.9	7.5	<b>1.3</b>
Manufacturing	9.6	10.1	8.8	8.6	6.5	7.4	7.2	7.2	7.5	<b>8.1</b>
Electricity & Water	2.1	2.3	2.3	2.2	1.9	1.9	1.8	1.8	1.7	<b>2</b>
Construction	5.3	4.9	5.2	4.9	5.2	4.9	5.1	4.9	4.7	<b>5</b>



### THE GDP SHARE OF SERVICES (%)

SECTOR	1992	1993	1994	1995	1996	1997	1998	1999	2000	average
Services	49.1	44.5	43.5	41.1	40.6	37.2	36.2	34.4	32.2	35.3
Government Service	10.3	7.8	7.8	7.2	7.5	5.9	6.5	6.2	5.8	6
Other Services	38.8	36.7	35.7	33.9	33.1	31.3	29.7	28.2	26.4	29

### THE GDP SHARE OF SERVICES (%)

